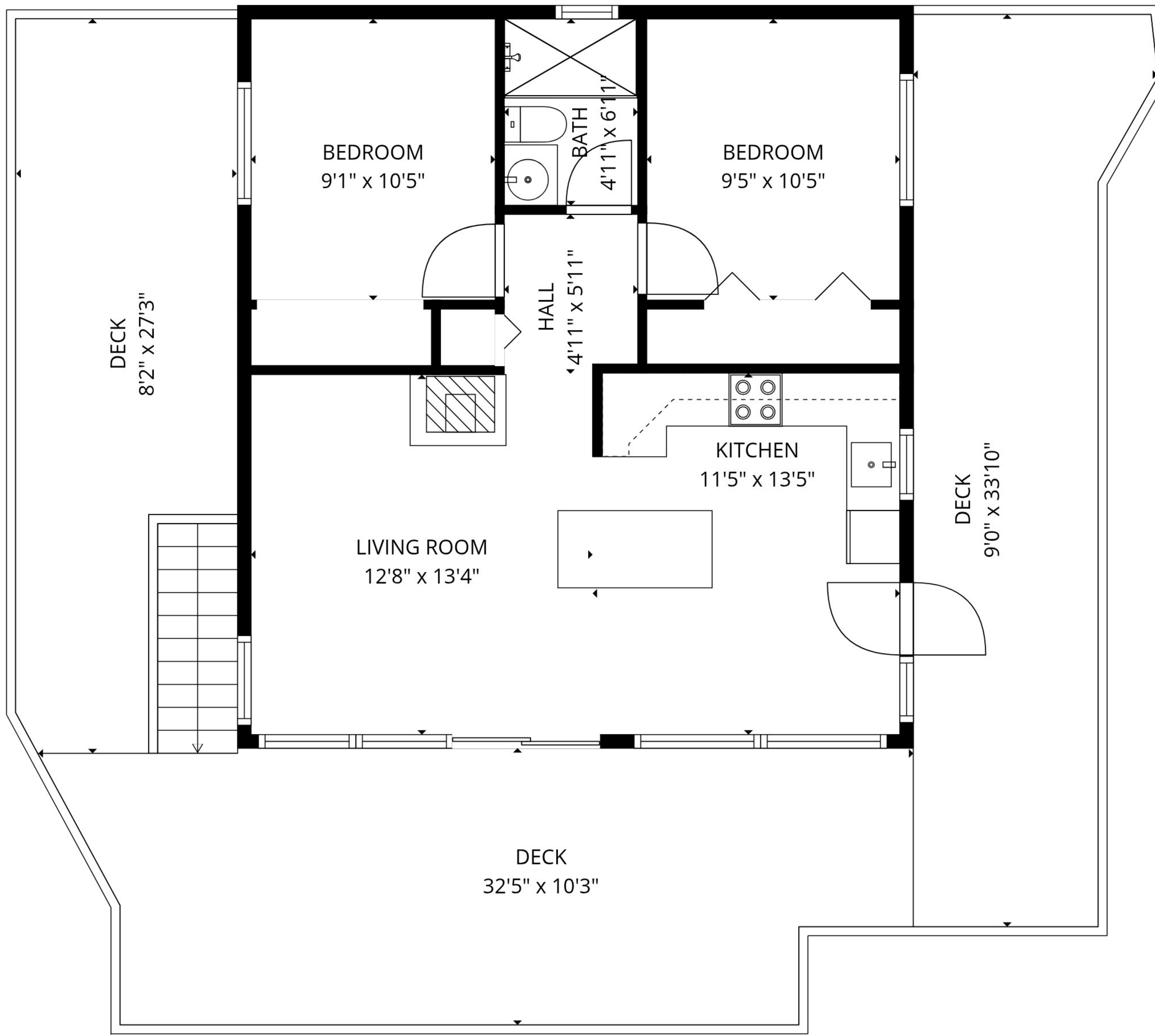
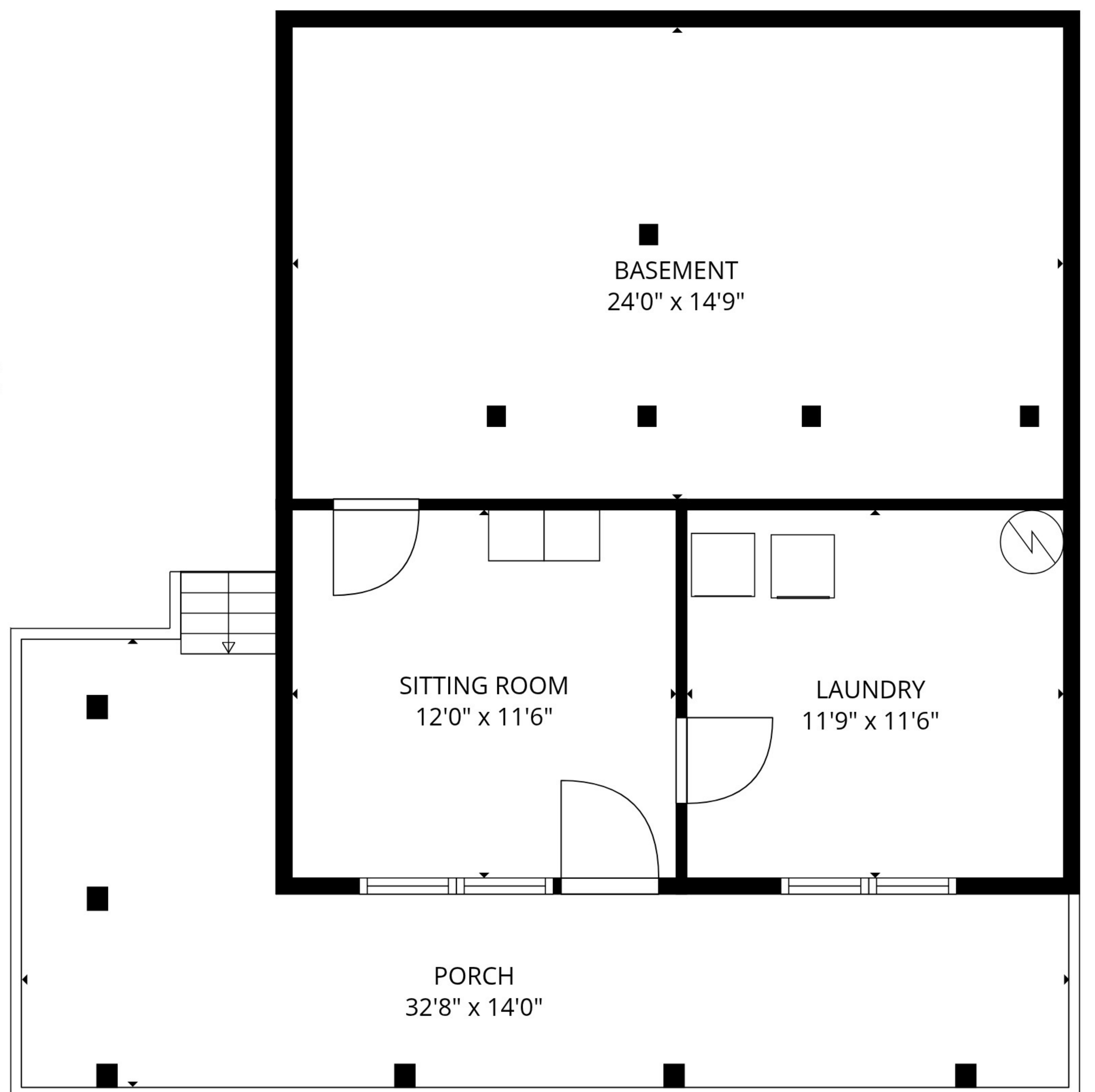


3602 Sailor Easement Rd



Approximate sq ft:
Main level: 700 sq ft
Deck: 775 sq ft
Lower level: 350 sq ft
Basement/Storage: 350 sq ft
Porch: 275 sq ft



Prepared for the exclusive use of Colin Denton and Dockside Realty Inc.
All measurements are approximate, buyer to verify if important.

